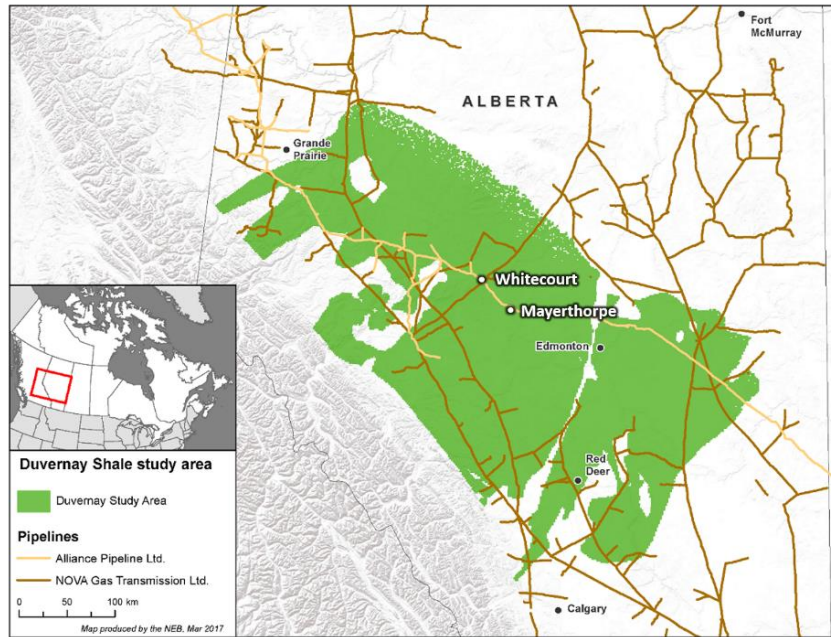




On behalf of our regional partners, the Whitecourt & District Chamber of Commerce is pleased to provide insight to the untapped opportunities and potential of our region as a provincially recognized Energy and Resource Corridor. Our region consists of the Town of Whitecourt, Town of Mayerthorpe, and Woodlands County.

Significant attributes of our region are the combinations of available land, pre-permitted development sites, ample water intake capacity, regional power plants, skilled workforce, proactive economic development initiatives, multiple methods of transportation and the abundance of natural resources throughout.

A multitude of development sites are available for urban or rural industrial development. Hundreds of acres of environmentally permitted industrial land is available with existing utilities, rail & highway access, transloading facilities, and adjacency to existing pipeline infrastructure. Excess water intake, water treatment and treated final effluent, steam capture, and the potential for carbon dioxide and waste heat power generation exhibits that the region is ready for traditional and progressive investment and development. Geothermal well sites are located throughout the region with output compatible with industrial developments.



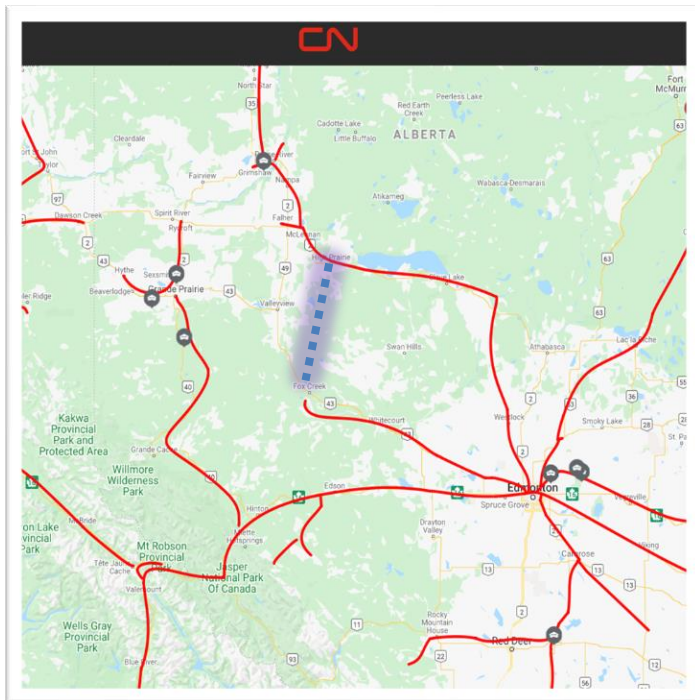
Natural resource industries operating throughout the region include forestry, oil and natural gas exploration, production and midstream activities, agriculture and mineral extraction. The consistent supply of these resources could equate to investment in value-add processing and final production related to:

- Lumber, wood pulp, wood composites
- Hydrogen, propane, custom blends, natural gas liquids
- Edible and industrial canola products, hemp products
- Lithium and magnesium from return wastewater
- Fracturing sand, gravel and aggregate
- Industrial greenhouses utilizing waste heat and carbon dioxide

Our region is a transportation hub with direct access to major highways, rail with transloading, a municipal airport and existing pipeline infrastructure throughout. A barrier to investment and value-add production is an existing CN Rail line that ends near Fox Creek. By extending this rail line North for approximately 120 kilometers, the region can tie into existing rail located near High Prairie. This



would then allow additional “Alberta Made” products and innovations to access northern and overseas markets via a line similar to the A2A (Alaska to Alberta) Railway.



Traditionally, petroleum based industrial development has been targeted to areas more central in Alberta. By recognizing the opportunities throughout Whitecourt & District, investors can diversify the location of their facilities, mitigating an “eggs in one basket” risk that may result from natural or man-made disasters. This also allows raw materials to be processed closer to extraction, and with extended rail, closer to export.

Further, consideration of the potential for green, grey or blue hydrogen delivery to the United States is of interest. Our region is home to natural gas fields and orphan wells, allowing for the production of both blue and grey hydrogen in wholesale quantities for export. Transport of this product may be in liquid, gas, or, potentially, solid form.

Rather than focussing on production and supply for our local or domestic market which is in the early stages of hydrogen energy use, the product has the potential to be produced in bulk quantities and exported to markets that are currently producing hydrogen energy but in a more costly fashion. Access to multiple sources of water supply plus geothermal produced energy could further allow for consistent green hydrogen production, resulting in environmentally sound energy production.

Connectivity between existing industrial facilities and commercial capsulated greenhouses would allow for utilization of geothermal, waste heat and/or carbon dioxide to allow environmentally friendly year-round food production, resulting in less reliance on produce imports, increased food security, and further consumer ready products for export or supply to northern markets.

The above is a sample of the potential our region has to offer. This potential is not in the distant future; we are shovel ready to diversify Alberta’s economy and showcase the “Made In Alberta” difference that is second to none. The Whitecourt & District Chamber of Commerce and our partners share the vision of the Government of Alberta, and we look forward to bringing to fruition the ample possibilities of our region.



Prepared by:
Whitecourt & District Chamber of Commerce
4907 - 52 Avenue
Whitecourt, Alberta T7S 1N9
www.whitecourtchamber.com